

WeavePoint Complex Drafting

Trial version with sample patterns

by Åsa Martinsson, 2002

Translated by B.T. Myhre

Introduction

To show the possibilities with Complex Drafting, various sample patterns are included. These sample patterns are installed in the subfolder "Samples for Complex Drafting".

The samples also illustrate different ways to make patterns. These are the ways I have developed while working with the software. With the samples where I describe the procedure for making the pattern, the final result is also included among the samples. To compare, you can open two program windows next to each other, one with the pattern you work on, the other with the final result. The final pattern sample includes all threadings, treadlings and tie-ups.

- Note: In all sample patterns, a filled square in tie-up and liftplan = rising warp end.
- You *can* use sinking shed, but then, in certain cases, you'll need to change point marks to sinking ends.

In the samples collection, there are a number of patterns from Sweden that can be developed with different weaves: **Galler 1** (*Lattice 1*), **Galler 2**, **Plommon** (*Plums*), **Blad** (*Leaf*), **Ekenmark** and **Randmönster** (*Striped pattern*). All are made so that one square equals one unit (découpure). With **Transform|Expand Pattern**, you decide how many ends and picks each unit will have. Pattern and weaves can be combined in different ways with **File|Open Components**.

To better see the interlacement of the threads, you can select **Threads** as **Drawdown Style** in **Options**.

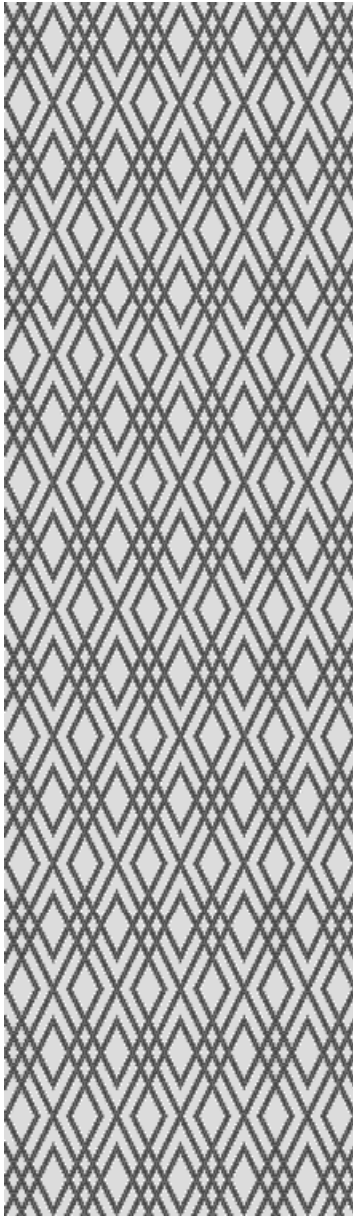
In the sample patterns, I have chosen to start the threading from the right and bottom of the threading grid, and to have shaft 1 at the top/treadle 1 at the right. These options are not saved in the files, so if you want to see the patterns as in the illustrations here, you should check that these options are selected.

Each pattern has more than one colorway. You can switch colorways in **Utilities|Edit Colors**.

Samples

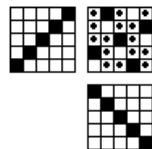
In the full tutorial that comes with the program, all the sample patterns are described and explained. For the demo version, here follows the description of the two first sample patterns.

Damask



Do the following to construct the weave:

1. Open the file *Galler2*.
2. Select **View|Draft** before you expand the pattern, because Design mode is limited to 500 ends and 500 picks. Draft mode can have up to 4800 ends and 4800 picks.
3. With **File|Save As**, save the pattern with a new name.
4. **Transform|Expand Pattern**. Select 5 ends and 5 picks.
5. **Options**. Select Shafts A: 5 and Treadles A: 5.
6. Draw the draft for 5-shaft satin.



7. The file *Damast 5 Galler 2* contains the final result.
8. Use **Utilities|Edit Colors** to see other colorways.
9. In *Damast 8 Galler2*, the same pattern uses 8-shaft satin as ground weave.

Damast 5 Galler 2

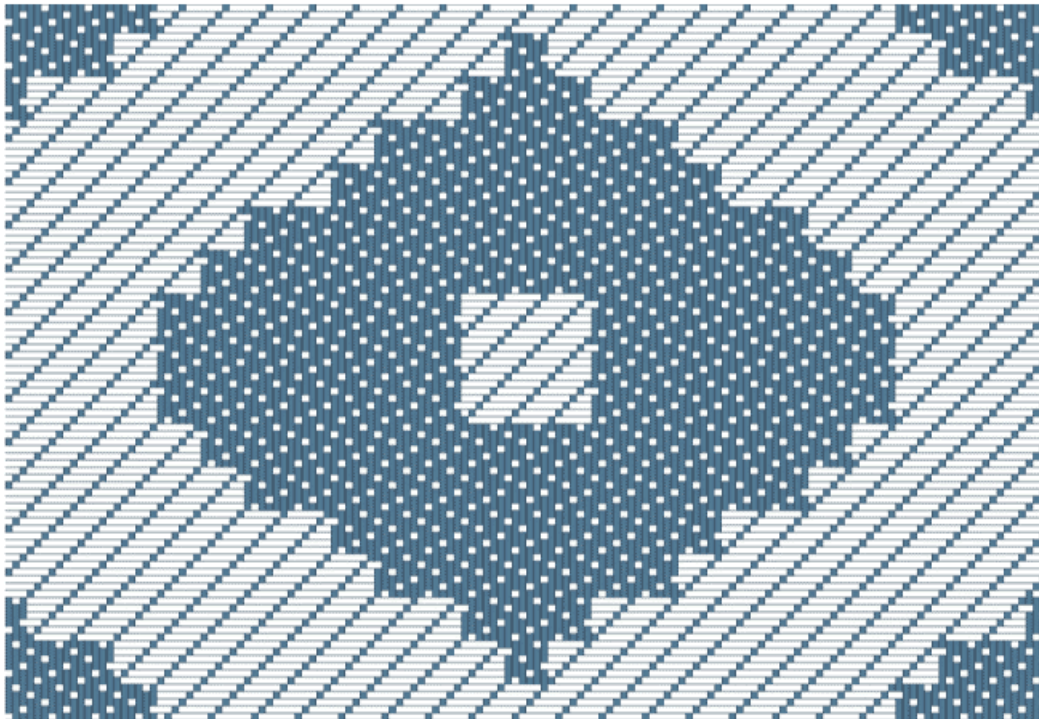
There are two different ways to display another pattern as damask with 5-shaft satin ground weave.

1. Open *Damast 5 Galler 2*.
 2. **File|Open Components.**
Doubleclick on *Plommon*. Check **Pattern Threading** and **Liftplan**. Leave all other options unchecked. **OK.**
 3. **Transform|Expand Pattern.**
5 ends x 5 picks.
 4. Remember to save with a new name (**Save As...**).
1. Open *Plommon*.
 2. **Transform|Expand Pattern.**
5 ends x 5 picks.
 3. **File|Open Components.**
Doubleclick on *Damast 5 Galler 2*. Check **Threading A**, **Treadling A** and **Tie-up AA**. Leave all other options unchecked. **OK.**
 4. Remember to save with a new name (**Save As...**).

Combining satin and twill

In traditional damask, warp satin is always combined with weft satin. However, you can also combine other weaves, like warp satin and weft-faced twill. The only limitation is that one end cannot both rise and sink in the same shed. This means you cannot combine any weaves. If you take a 5-shaft satin, you'll note that it cannot be combined with a twill diagonal.

In the sample file *Satin-Kypert Plommon (Satin-Twill Plums)*, I have combined a 6-shaft warp satin with a 6-shaft weft-faced twill.



Satin-kypert Plommon drawdown displayed with the **Threads Outlined** option.